



PROJECT HORIZONS

A STORYLAND STUDIOS
DESIGN ENTRY - ORIGIN STORY

Imagining New Realities

Project Horizons emerges as a visionary leap forward from its predecessor, TikiTech, embodying the next evolution in immersive, interactive experiences. This narrative ventures beyond traditional boundaries by merging art and technology to create environments that resonate deeply with audiences. It extends the innovative concepts explored during Erick Mahnke's Master's capstone project in Art and Technology, evolving these into a multifaceted platform for expansive storytelling. This document outlines the pivotal inspirations from TikiTech and discusses the evolution into Project Horizons, illustrating the journey of advancing thematic entertainment through technology and narrative.

The Genesis of TikiTech

TikiTech, conceived by Erick Mahnke, redefined thematic entertainment by integrating Tiki culture with state-of-the-art technology. This project, which combined Mahnke's background as a Disney Imagineer and expertise in engineering, created an immersive bar environment where guests could engage with Polynesian mythology through interactive and sensory-rich experiences. TikiTech was not merely a venue but a narrative adventure, offering lessons about the integration of sensory elements and storytelling, which are foundational to the conceptualization of Project Horizons.

Key Features of TikiTech:

1. Narrative-Driven Design:

- Interactive storytelling with integrated cultural themes.
- Engaging patrons directly to influence the narrative flow.

2. Technological Integration:

- Use of animatronics, touchscreens, and motion sensors to enhance interactivity.

3. Sensory Engagement:

- Incorporation of thematic soundscapes, lighting, and scents to enrich the immersive atmosphere.

4. Cultural Appreciation:

- Thoughtful integration of Polynesian culture, enhancing authenticity and respect.

Lessons Learned from TikiTech:

- **Importance of Immersive Storytelling:** The success of TikiTech demonstrated that a cohesive story enhances guest engagement and satisfaction.
- **Role of Sensory Inputs:** Sensory experiences significantly contribute to creating an immersive environment.
- **Effective Use of Technology:** Integrating interactive technology can transform a traditional space into an engaging, dynamic experience.

Expanding Narratives

Project Horizons builds on TikiTech's narrative-driven approach by offering a broader canvas for storytelling. Unlike the singular cultural focus of TikiTech, Project Horizons aims to host a diverse array of thematic experiences, from historical epics to futuristic explorations, all maintained within immersive, adaptive environments.

Advanced Technological Integrations

Leveraging lessons from TikiTech, Project Horizons employs more sophisticated technologies such as AR, VR, and haptic feedback to create deeply engaging and responsive environments. These technologies facilitate dynamic interactions that evolve based on visitor engagement, illustrating a leap towards more complex and layered experiential design.

Sensory Innovations

Enhancing the multisensory approach of TikiTech, Project Horizons integrates advanced sensory technologies that adapt in real-time to visitor interactions. This progression aims to create not just visually stunning environments but ones that can be felt, smelled, and heard, providing a fully immersive experience.

From Past Lessons to Future Innovations

Project Horizons is conceptualized as a synthesis of past insights and future aspirations, aiming to redefine immersive entertainment. It seeks to combine the successful elements of TikiTech with new innovations, setting new standards in the themed entertainment industry.

Envisioning Project Horizons

Project Horizons represents not just an evolution of TikiTech but a new paradigm in interactive entertainment. It promises a blend of art, technology, and narrative that challenges the conventions of thematic experiences, offering a new universe of storytelling possibilities. This project stands as a testament to the transformative power of combining detailed narrative with cutting-edge technology, inviting guests to explore new worlds within an immersive, interactive canvas.

A message from the artist: Erick Mahnke



TikiTech represents the harmonious convergence of Tiki culture's vivacious allure and cutting-edge interactive technology, seamlessly blending art, engineering, and storytelling. This endeavor is a culmination of my personal and professional journey, drawing from my background as an Imagineer and my expertise in electromechanical and software engineering. It's a creative venture aimed at redefining the bar experience, inviting patrons to immerse themselves in a narrative-driven tropical escapade that merges the enchantment of Polynesian mythology with modern interactivity.

The project's aesthetic foundation is deeply rooted in Tiki culture's vibrant color schemes, intricate carvings, and whimsical designs, resonating with my artistic sensibilities. These elements not only visually captivate but also serve as a storytelling medium, enabling guests to interact with the rich lore of Tiki gods and embark on captivating journeys. The inclusion of sensory experiences, such as ocean wave sounds, tropical scents, and unique cocktails, completes the immersive ambiance.

Technologically, TikiTech is a playground for innovation. Interactive elements are intricately integrated into the environment, dynamically responding to and enhancing the guest experience. From responsive lighting mimicking tropical sunsets to games you can play with Tiki Gods from Polynesian lore, each technical decision is aimed at deepening immersion and fostering wonder.

This project transcends mere entertainment; it signifies the seamless fusion of art and technology. It is part of a broader exploration into how technology can elevate traditional art forms, unlocking new dimensions of experiential storytelling. TikiTech embodies the culmination of my journey in engineering and artistry, where each technical choice contributes to a canvas of interactive narrative.

In crafting TikiTech, I've been inspired by the escapism and joy inherent in Tiki culture, creating a space that offers relief from the mundane. It's an environment where physical and imaginary boundaries blend, inviting guests to lose themselves in narratives and depart with memories of stationary yet expansive adventures across the vast Pacific. TikiTech beckons exploration, playfulness, and revelry in the magic of a technologically infused paradise.

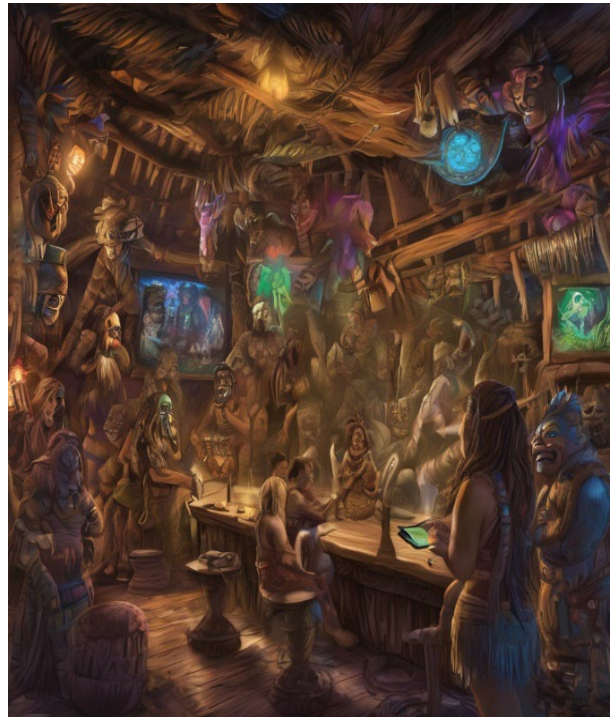
TikiTech: An Immersive Experience



The concept of TikiTech is rooted in a deep appreciation for the historical and cultural significance of Tiki culture, which emerged in the mid-20th century as an American fascination with the South Pacific. It is a culture that celebrates the mystique of Polynesian gods, the beauty of tropical landscapes, and the art of crafting potent and visually stunning cocktails. Tiki bars became sanctuaries of leisure and fantasy, where one could indulge in the illusion of an island getaway. TikiTech builds upon this foundation, enhancing it with interactive technology that allows for a personalized journey through this tropical paradise.

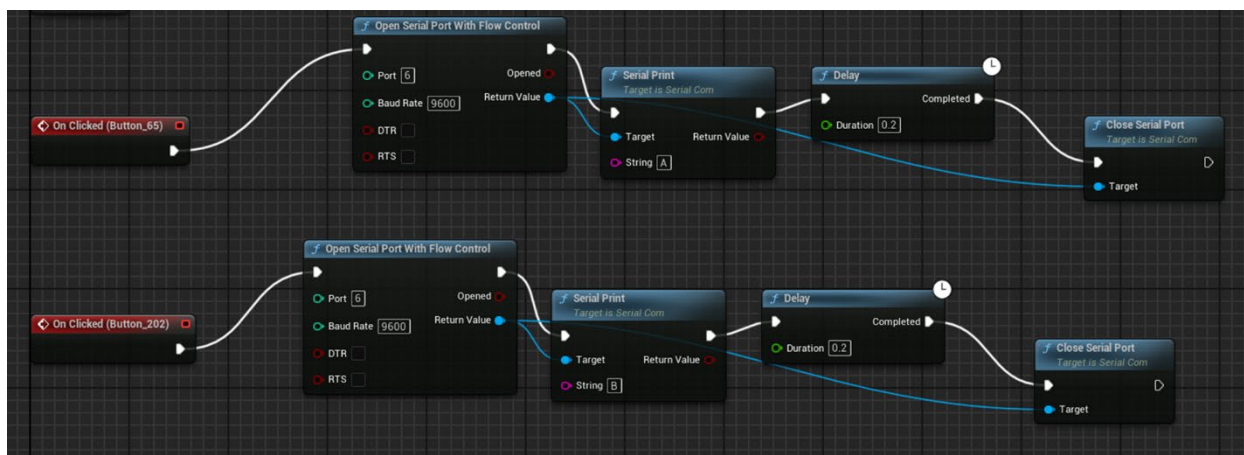
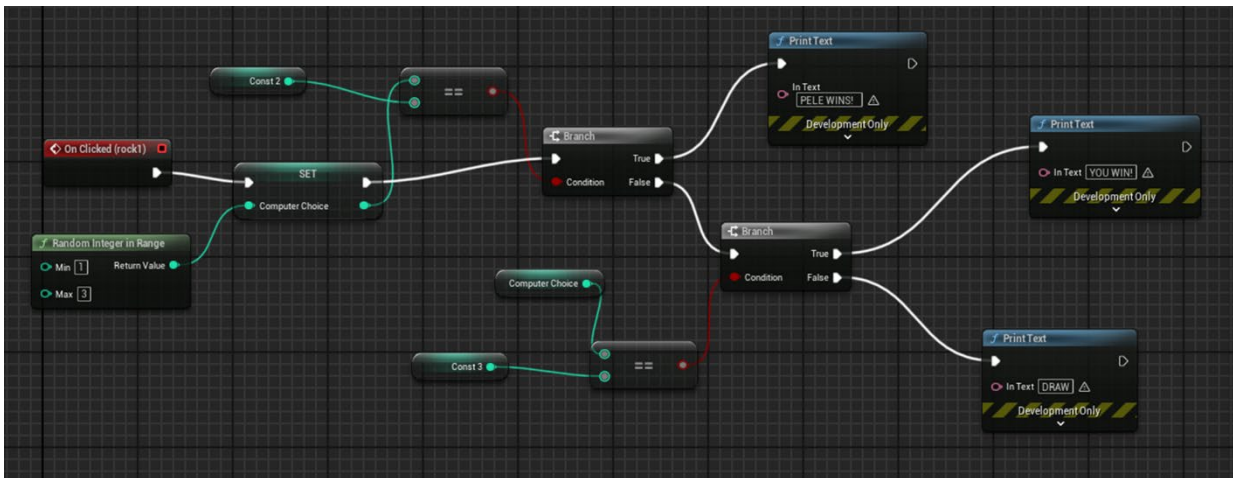
At TikiTech, the traditional bar experience is reimagined. Patrons are not merely observers but active participants in a dynamic narrative that unfolds around them. The integration of advanced technologies such as touchscreens, motion sensors, and animatronics transforms the space into a living storybook. Each visit offers a new chapter, a new adventure, as guests uncover hidden storylines, interact with the environment, and become part of the legend that is TikiTech.

The vision for TikiTech is ambitious and multifaceted, aiming to set a new standard for themed entertainment venues. It is a place where art meets engineering, where the past and future collide, and where every guest can find a momentary escape from the mundane. TikiTech is not just a destination; it is an experience, a journey to a world of imagination and wonder, powered by the magic of technology and the timeless appeal of Tiki culture.



Interactive Experiences

Welcome to TikiTech, where the fusion of Tiki tradition and state-of-the-art technology creates an unparalleled immersive experience. As patrons enter, they are presented with an interactive menu, a digital gateway to a world of enchantment and adventure. This Unreal Engine-powered menu is not just a list of beverages; it's the starting point of an interactive journey, where each cocktail selection initiates a unique storyline, complete with multisensory effects and interactive elements. This journey is a culmination of art, design, and varying sets of game logic programmed to keep each experience new, fresh, and exciting. Breaching the digital realm and interacting with the surrounding environment.



Molten Majesty: Ingredients

2 oz Appleton Estate 8 Year Reserve Rum
1/2 oz Lime Juice
1/2 oz Orange Curacao
1/2 oz Orgeat Syrup
1/4oz Ancho Reyes Chile Liqueur
1/4 oz Hibiscus Grenadine (to symbolize lava)
3 dashes of Angostura Bitters
Garnish: Torched Orange Peel, Tajin Rim



Molten Majesty: Interactive Storyline

Step into the fiery realm of Pele, the Hawaiian goddess of volcanoes, with TikiTech's "Molten Majesty" cocktail. This immersive experience begins when you select the volcano-themed drink from the interactive Unreal Engine menu. As you do, the coasters beneath the spirits of your chosen drink come to life, glowing with an ominous light that signals the start of your volcanic adventure.

The room suddenly shifts into a deep, volcanic red, mimicking the smoldering heart of a lava flow. It's as if the very essence of Pele has enveloped the space. Then, with a dramatic flair, Pele announces her presence, her voice resonating through the room, inviting you to engage in a playful yet potentially perilous game of rock, paper, scissors.

As you accept her challenge, the tension builds. Each time you best the goddess, her anger simmers like the rising heat of a volcano on the brink of eruption. The RGB controllable lights in the room pulse with increasing intensity, reflecting Pele's growing fury.

Finally, should you dare to win one time too many, the climax of the experience is unleashed. A volcanic eruption engulfs the Tiki Wall in a spectacular projection, complete with Pele's thunderous yell echoing around you. The lighting in the room flashes rapidly, as if caught in the heart of the eruption.

This intense scene can be brought to a close in two ways: it will either time out gradually, allowing the room to return to its tranquil state, or you can utter a specific gesture or phrase into the strategically placed microphone, which serves as your escape from Pele's wrath. This audio cue instantly deactivates the experience, a safety feature that ensures the comfort and enjoyment of all TikiTech explorers.

Hooked On Maui: Ingredients

2 oz Teremana Añejo Tequila

1 oz Fresh Pineapple Juice

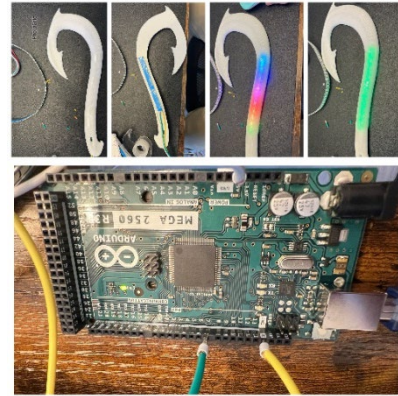
1/2 oz Coconut Cream

1/2 oz Lime Juice

1/4 oz Blue Curacao (for a touch of ocean color)

1/4 oz Falernum

Garnish: Egg white "foam" with touch of pink salt, Add splash coconut and Blue curacao for color (looks like ocean waves)



Hooked on Maui: Interactive Storyline

Embark on a legendary quest with TikiTech's "Hooked on Maui" cocktail, where you become the chosen one to aid Maui, the mischievous Polynesian demigod known for his magical fishhook. The adventure begins with a clever twist: as you select the drink from the interactive unreal engine menu, you'll be transported into a new dimension, setting the stage for your journey.

Maui's voice fills the room, seeking your assistance. The coasters under the spirits of your chosen drink illuminate, signaling your acceptance into Maui's ranks. With the stage set, you're drawn into an Unreal Engine-based mini-game, a digital scavenger hunt that tasks you with locating Maui's misplaced treasure.

As you navigate the game you will stumble upon items that may not exactly help you, but will trigger responses from the Demi God Maui. The RGB controllable lights in the room may shift, reflecting the various stages of your quest as you progress.

Upon the triumphant discovery of Maui's lost item within the game, the room bursts into a celebratory display. The Tiki Wall comes alive with a projection that honors your success, and somewhere within the space, Maui's iconic hook begins to glow, a beacon of your achievement.

The Garden of Lono: Ingredients

Ingredients:

2 oz Waterloo Old Yaupon Gin

1 oz Fresh Lemon Juice

1/2 oz St. Germain Elderflower Liqueur

1/2 oz Domaine de Canton Ginger Liqueur

A splash of Fresca

Garnish: Mint sprig and a skewered cucumber slice.



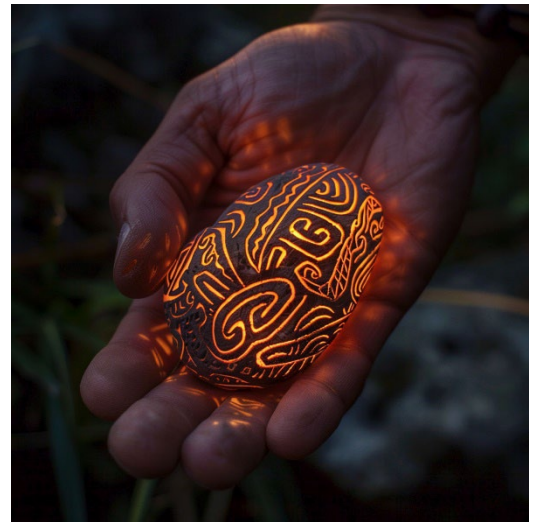
The Garden of Lono: Interactive Storyline

Immerse yourself in the divine mystery of "The Garden of Lono," a cocktail experience that calls upon you to calm the storm of an angered deity. Your journey begins when you select Lono's drink from the Unreal Engine-powered menu, a choice that immediately sets the elements into motion.

As the coasters under the spirits in your selected drink glow, a signal that you've been chosen for this sacred task, the room transforms before your eyes. The LED lights dim to a foreboding blue, and the sound of a thunderstorm fills the air, complete with audio effects that mimic the power of nature's fury. Lono, the Hawaiian god of fertility, peace, and rainfall, makes his presence known, his voice booming with displeasure over his missing sacred stone.

Your mission is clear: locate the missing stone, a beautifully rendered object created in Maya and embedded with RFID technology. As you search TikiTech for this precious artifact, the storm continues to rage, the projections on the Tiki Wall illustrating the chaos that ensues without the stone in its rightful place.

The quest culminates when you discover the stone and place it into the slot equipped with an RFID reader. The moment the stone is returned, the room responds in kind. The thunderous sounds dissipate, the LED lights brighten to a warm, welcoming glow, and the projections on the wall transition to a scene of peace and serenity, symbolizing the restoration of balance thanks to your efforts.



Tiki Me Home Tonight Ingredients:

2 oz PAU Hawaiian Vodka
1 oz pineapple juice
1 oz mango juice
1 oz POG juice (Passionfruit, Orange, Guava)
0.5 oz orgeat syrup
0.5 oz falernum
0.5 oz fresh lime juice
Crushed ice
Garnish: Edible orchid



Tiki Me Home Tonight: Interactive Storyline

Let the rhythm take you away with "Tiki Me Home Tonight," a playful and spirited cocktail that orchestrates a symphony of light and sound at TikiTech. This drink is a celebration of the joyous side of Tiki culture, offering a lighthearted escape that begins the moment you make your selection.

As you choose this enchanting beverage from the menu, the coasters beneath the spirits of your drink come alive, illuminating in sync with the anticipation of the experience to come. Suddenly, a carefully curated song fills the room, its tropical beats and exotica melodies inviting you to sway along.

In harmony with the music, the lights within TikiTech begin to dance. LED fixtures around the room pulse, flicker, and change colors, creating a visual performance that mirrors the energy of the tune. The lights' choreography is a spectacle in itself, drawing everyone's gaze as they move in rhythm with the melody, enhancing the convivial atmosphere of the space.

"Tiki Me Home Tonight" is more than just a cocktail; it's an interactive moment that brings together the collective spirit of TikiTech's patrons. It's a shared experience that encourages laughter, conversation, and a sense of community as everyone joins in the revelry of the song and light show.

Ka Pau Loa Ingredients:

1 oz Lemon Juice

1 oz Orange Juice

½ oz Hibiscus Grenadine

1 oz Cointreau

1 oz Appleton Estate 8 Year

1 oz Bacardi

1 oz Demerara Skipper Rum Dark

1 dash Pernod

Garnish: Mint sprig and cherry



Ka Pau Loa: Interactive Storyline

As the evening winds down, TikiTech offers a tranquil toast to the night with "Ka Pau Loa," the ultimate final drink, inspired by the wisdom of generations past. This cocktail is a homage to the creator's grandfather, embodying the spirit of a timeless tradition and the gentle closure of a memorable night.

Upon selecting Ka Pau Loa from the menu, the atmosphere within TikiTech shifts to a serene and introspective mood. The coasters under the spirits of your drink softly glow, a beacon in the dimly lit room that now echoes with the soothing sounds of ocean waves crashing in the distance. This auditory backdrop, coupled with the subdued lighting, invites patrons to relax and reflect on the adventures of the evening.

As you savor the flavors of Ka Pau Loa, the environment gradually transitions, the lighting slowly brightening back to its original state. This gentle progression is not just a signal that the night is coming to an end, but also a reminder of the ebb and flow of the tides, the natural rhythm of the world outside TikiTech's walls.

Ka Pau Loa is more than a cocktail; it's a sensory experience that encapsulates the essence of a peaceful nightcap. It's a moment to gather your thoughts, to share final stories with friends, and to bask in the calm before stepping back into the world. With each sip, you're not just concluding your journey at TikiTech; you're carrying a piece of its tranquility with you, a lasting memory of an evening spent in a tropical tech-infused paradise.

The Future of TikiTech

As TikiTech continues to evolve, the fusion of Tiki culture and innovative technology will expand to include a variety of themed modes, each meticulously crafted to transform the ambiance and provide guests with an ever-changing tapestry of experiences.

Day and Night Modes:

The Day mode will bathe TikiTech in a warm, golden light, reminiscent of a sun-drenched tropical island. Patrons can bask in the simulated sunlight, surrounded by the sounds of gentle waves and the soft rustling of palm leaves, creating a bright and energizing atmosphere perfect for daytime revelry.

As the sun sets, Night mode takes over, enveloping the room in the cool hues of twilight. Stars twinkle in the projected night sky, and the moon casts a soft glow over the space. The transition from day to night is seamless, with lighting and audio effects gradually shifting to reflect the passage of time, encouraging guests to unwind and savor the enchanting evening ambiance.

Holiday Modes and Thematic Experiences:

Future developments at TikiTech will introduce Holiday modes, where the spirit of the season will be woven into the fabric of the environment. Imagine TikiTech adorned with festive decorations, lights that sparkle with holiday colors, and a curated playlist of seasonal tunes that bring cheer to every corner of the room.

Other thematic experiences will transport patrons to various realms within the TikiTech universe. These could range from underwater adventures, where the room transforms into a coral reef teeming with marine life, to mystical jungle expeditions, complete with the sounds of exotic birds and the rustle of hidden creatures.



Each themed mode will be an immersive journey, utilizing the latest in lighting technology, projection mapping, and sound design to create a multi-sensory experience that is both authentic and captivating. The integration of interactive elements, such as touchscreens and motion sensors, will allow guests to engage with the environment in new and exciting ways, ensuring that every visit to TikiTech offers a fresh adventure and a new story to be part of.

Timeline and Schedule

Month	Stage	Description
January 2024	Concept Development	- In-depth research into Tiki culture for authenticity.
		- Narrative mapping for interactive storylines.
		- Initial design concepts for bar's aesthetic and tech integration.
		- Preliminary software evaluations and decisions.
February 2024	Software/Hardware Procurement	- Acquisition of Unreal Engine licenses.
		- Hardware procurement (LED coasters, RGB lights, projection systems, audio equipment).
March 2024	Content Creation	- Development of visuals for storylines and themed modes.
		- Creation of soundscapes and scent profiles for immersive experiences.
		- Storyboard/Concept art creation for interactive elements.
April 2024	Programming and Installation	- Programming of cross-communicating platforms for interactive elements.
		- Installation of hardware components for the first storyline.
		- Development of the Unreal Engine menu interface.
May 2024	Testing and Calibration	- Testing of the storylines and interactive elements.
		- Calibration of lighting, audio, and projection systems.
		- Adjustments based on initial testing feedback.

This ambitious timeline has been adjusted to accommodate the switch from Unity to Unreal Engine, a strategic decision made in light of the partnership between Epic Games and Disney. This move was made to align better with future career aspirations, providing valuable experience with industry-leading tools.

The development process will focus on one storyline at a time, ensuring that each narrative is given the attention to detail it deserves. This approach allows for a more manageable workload and the ability to make precise adjustments as needed. The first storyline, Molten Majesty, serves as the pilot for the entire project, setting the standard for the interactive experiences to follow. By concentrating on this initial offering, TikiTech can ensure a high-quality experience from the outset, building excitement and anticipation for the adventures that lie ahead.

As TikiTech progresses, the overall goal will remain committed to pushing the boundaries of what's possible, creating a unique and dynamic environment that celebrates Tiki culture through the lens of modern technology. With each step, TikiTech moves closer to becoming a destination that offers not just a drink, but a journey into a world of myth, magic, and innovation.

Physical Location and Elements

The physical location of TikiTech plays a crucial role in enhancing the immersive experience that is at the core of this innovative venture. It serves as the tangible counterpart to the digital and interactive elements, creating a seamless blend of real-world ambiance and virtual storytelling. By carefully designing every aspect of the physical space, from lighting to décor, TikiTech ensures that patrons are fully immersed in the captivating narratives that unfold around them. Pictured is the location for the project prior to development.



One of the key elements of the physical space at TikiTech is the dynamic RGB lighting system. This system is intricately connected to the interactive storylines, responding in real-time to the events and emotions within each narrative. Whether it's the fiery glow of a volcanic eruption or the tranquil hues of a sunset, the RGB lighting adds depth and immersion to the storytelling, making every moment feel vivid and lifelike.



In addition to the lighting, TikiTech features a surround sound system. This system is carefully calibrated to enhance the immersive experience, enveloping patrons in a symphony of sounds that complement the visual storytelling. From the roar of a thunderstorm to the gentle lapping of ocean waves, the surround sound adds layers of realism and emotion to the narratives, transporting guests to exotic realms and mythical adventures.

Central to the physical design of TikiTech is a large media screen strategically positioned within the space. This screen serves as a focal point for immersive shows and digital experiences, seamlessly integrating with the surrounding environment to create the illusion of a window into different worlds. Whether it's a panoramic view of a tropical island or a dynamic backdrop for interactive games, the media screen enhances the narrative depth and visual spectacle of TikiTech.



Complementing these digital elements are themed props scattered throughout the room, adding authenticity and detail to the immersive experience. From ancient artifacts to

mystical relics, each prop tells a story and enriches the overall narrative tapestry of TikiTech. Combined with a cloud ceiling adorned with LEDs that can simulate different times of day and weather conditions, as well as bamboo and woven Hawaiian matting on the walls to evoke a genuine Tiki atmosphere, these physical elements work harmoniously to transport patrons to a world of adventure and wonder within TikiTech's walls.



Subject, Theme, and Concepts

TikiTech is not merely a bar; it is a cultural nexus that celebrates the rich heritage of Tiki culture, a mid-20th-century style that itself was an American homage to the mystique of the South Pacific. The thematic heart of TikiTech beats with stories of gods and goddesses, island legends, and the spirit of aloha that is central to Polynesian life. The concept is to create a space that is not just themed but is a living storybook, where every corner, every artifact, and every concoction serves as a narrative device that propels patrons into the folklore that has captivated imaginations for generations.



The TikiTech experience is a journey through a fantastical interpretation of Polynesian mythology, where patrons can encounter the likes of Maui, the trickster demigod who harnessed the sun's energy, or Pele, the goddess of volcanoes and fire who commands the elements with her fiery temper. These stories are not just passively told but are actively experienced through the interactive environment of TikiTech. Patrons might solve a riddle based on Maui's legends to unlock a hidden cocktail recipe or witness an animatronic Pele erupt in a dazzling display of lights and special effects.



The thematic elements of TikiTech are carefully chosen to reflect the diversity and depth of Polynesian mythology. The bar's environment is a labyrinth of islands, each representing different stories and gods. The design incorporates traditional Polynesian symbols and motifs, such as the spiral, which signifies growth and evolution, or the tiki, which serves as a guardian figure. These symbols are not merely decorative but are imbued with meaning and purpose, serving as touchstones for the stories that unfold within the space.

The concept of TikiTech also embraces the communal spirit of Tiki culture, where sharing stories and drinks is a way of forging connections and celebrating life. The interactive elements are designed to encourage collaboration and interaction among patrons, fostering a sense of community and shared adventure. This is a place where the lines between strangers blur, and everyone is united by the common thread of the TikiTech narrative.

In crafting the TikiTech experience, great care is taken to respect and honor the cultural origins of the Tiki stories and motifs. The project is a celebration of Polynesian culture, not an appropriation of it. The stories are presented with reverence and authenticity, drawing from a deep well of research and consultation with cultural experts. This ensures that TikiTech is not just an immersive experience but also an educational one, where patrons can learn about the rich traditions and myths that are the foundation of Tiki culture.

Artistic Influences

The artistic and technological tapestry of TikiTech is a harmonious blend of homage and innovation, drawing from a rich history of Tiki culture and the forefront of interactive technology. The aesthetic of TikiTech is deeply influenced by the works of notable artists and designers who have left an indelible mark on the world of Tiki and themed entertainment.

Samuel McKim's contributions to the early concept art of Disneyland's Adventureland have been a guiding light for TikiTech's visual storytelling. His ability to capture the essence of exotic locales with a sense of wonder and authenticity informs the environmental design of TikiTech, ensuring that each space within the bar tells a part of the greater narrative.



Jeff Granito's vibrant and stylized interpretations of Tiki iconography offer a modern twist to the classic motifs. His use of bold colors and dynamic compositions influences the visual language of TikiTech, providing a contemporary edge to the traditional Tiki aesthetic. Granito's art infuses the space with energy and a fresh perspective that resonates with a new generation of Tiki enthusiasts.

Brandon Kleyla's work as a set decorator and designer for Trader Sam's Enchanted Tiki Bar brings a level of detail and immersion that is integral to the TikiTech experience. His expertise in creating environments that are both visually stunning and narratively rich sets a standard for the intricate design elements that populate TikiTech, from the smallest décor piece to the overall layout of the bar.



TikiTech's mesh with Contemporary Art and Design

TikiTech represents a groundbreaking fusion of art, technology, and storytelling that positions it uniquely within the contemporary art and design landscape. At its core, TikiTech challenges traditional notions of art by redefining the canvas as an immersive physical space where narrative, interaction, and sensory experiences converge.

In contemporary art, there's a growing trend towards experiential and immersive installations that engage audiences on multiple levels. TikiTech aligns with this trend by offering a dynamic environment where patrons don't just passively observe but actively participate in a narrative-driven experience. This blurring of boundaries between art, entertainment, and technology is a hallmark of contemporary artistry, where artists leverage cutting-edge tools to create transformative encounters.

From a design perspective, TikiTech showcases innovative approaches to thematic environments and interactive storytelling. The meticulous attention to detail in crafting the physical space, from lighting to décor to sensory elements, demonstrates a sophisticated understanding of how design elements can evoke emotions and enhance narratives. By integrating advanced technologies like Unreal Engine, motion sensors, and RFID technology, TikiTech exemplifies the intersection of design aesthetics with practical functionality, pushing the boundaries of what themed environments can achieve.

Goals for Societal or Community Impacts

Beyond its artistic and design merits, TikiTech has profound implications for societal and community impacts. One of the key aspects is its role in fostering cultural appreciation and understanding. By immersing patrons in the mythology and aesthetics of Tiki culture, TikiTech becomes a platform for education and celebration of Polynesian heritage. This not only enriches the cultural experiences of visitors but also contributes to the preservation and promotion of diverse cultural narratives.

Moreover, TikiTech serves as a catalyst for social interaction and community engagement. Themed environments like Tiki bars have historically been spaces where people gather, socialize, and form connections. TikiTech builds on this tradition by creating a shared space where patrons from diverse backgrounds come together to experience collective storytelling and immersive adventures. This communal aspect promotes social cohesion, dialogue, and a sense of belonging within the community.

In terms of economic impact, TikiTech has the potential to stimulate local economies through tourism, job creation, and partnerships with local artists and vendors. By attracting visitors who seek unique and immersive experiences, TikiTech contributes to the vitality of the hospitality and entertainment sectors, supporting small businesses and cultural enterprises in the surrounding area.

A decorative border of palm trees surrounds the entire page. The border is composed of a single row of palm trees along the top and bottom edges, and two vertical columns of palm trees along the left and right edges. The palm trees are stylized with black outlines and fronds.

Professional Goals for TikiTech

As TikiTech evolves, several professional goals come into focus, aligning with broader aspirations in the fields of art, technology, and entertainment.

1. **Innovation and Research:** Continually pushing the boundaries of interactive technology and immersive storytelling. This includes exploring new technologies, refining interactive elements, and conducting research on user experiences to enhance engagement.
2. **Collaboration and Partnerships:** Forge collaborations with artists, technologists, cultural institutions, and industry leaders to exchange ideas, foster innovation, and expand the reach of TikiTech globally.
3. **Education and Outreach:** Develop educational programs, workshops, and initiatives that promote STEAM (Science, Technology, Engineering, Arts, Mathematics) education through the lens of immersive experiences and themed entertainment.
4. **Sustainability and Ethical Design:** Incorporate sustainable practices, eco-friendly materials, and ethical design principles into the ongoing development and operations of TikiTech, aligning with contemporary values of environmental stewardship and social responsibility.
5. **Cultural Preservation:** Collaborate with cultural experts, indigenous communities, and historians to ensure authentic representation, cultural sensitivity, and respectful storytelling within TikiTech, contributing to the preservation and promotion of cultural heritage.

Overall, these professional goals reflect TikiTech's commitment to continuous innovation, community engagement, education, sustainability, and cultural stewardship within the realms of contemporary art, design, and technology.

Annotated Bibliography

AllEars.Net. "Disney's Enchanted Tiki Room Reviews & Ratings." AllEars.Net, <https://allears.net/walt-disney-world/wdw-dining/reviews/disneys-enchanted-tiki-room/>.

This webpage compiles visitor feedback and ratings for Disney's Enchanted Tiki Room, providing valuable insights into what guests enjoy and expect from Tiki-themed attractions. The comments highlight the importance of atmosphere, nostalgia, and interactive elements, which are key considerations for the design and experience of TikiTech.

Caldwell, K. "The Enchanted Tiki Room: Walt Disney's Tropical Serenade." Disney History Institute, <https://www.disneyhistoryinstitute.com/2013/06/the-enchanted-tiki-room-walt-disneys.html>.

Caldwell's article offers a historical perspective on the Enchanted Tiki Room, emphasizing the significance of maintaining audience nostalgia while incorporating modern updates. This balance of tradition and innovation is crucial for TikiTech's approach to creating a contemporary Tiki experience that honors its roots.

Emerj. "How Disney Uses Artificial Intelligence." Emerj, <https://emerj.com/ai-sector-overviews/how-disney-uses-artificial-intelligence/>.

This article explores the various applications of AI in Disney theme parks and attractions, providing relevant examples for integrating advanced technologies into TikiTech. The use of AI for enhancing guest interactions and personalizing experiences informs the technological strategies employed at TikiTech.

Friedman, J. S. "In the Shadow of the Mouse: A History of Disney Labor Relations." University Press of Florida, 2019.

Friedman's book delves into the internal dynamics of Disney, particularly in terms of labor relations and creative processes. The insights gained from this resource inform the management and operational strategies for TikiTech, ensuring a positive work environment that fosters creativity and collaboration.

Goldberg, A. H. "Disney: The First 100 Years." Disney Editions, 1999.

Goldberg's comprehensive history of Disney provides context for the storytelling principles and design ethos that influence TikiTech. The book underscores the importance of creating immersive narratives and authentic environments, which are central to TikiTech's artistic vision.

Iwerks, L. "The Imagineering Field Guide to Disney's Theme Parks." Disney Editions, 2005.

Iwerks' guide offers a behind-the-scenes look at the development of Disney's theme parks, inspiring innovative approaches to immersive environment creation. The techniques and philosophies discussed in the book are applied to the design and execution of TikiTech's interactive spaces.

Leibacher, H. "Disney's Audio-Animatronics: A History." Theme Park Press, 2018.

Leibacher's history of Disney's audio-animatronics provides a detailed overview of the technology's evolution and application in themed entertainment. This knowledge informs the design and implementation of animatronic elements within TikiTech, enhancing the storytelling and interactive experience.

Nichols, C. "Walt Disney's Enchanted Tiki Room." Disney Editions, 2013.

Nichols' book offers an in-depth look at the development and impact of the Enchanted Tiki Room, providing valuable insights into thematic elements and storytelling techniques. The principles outlined in the book guide the narrative development and thematic consistency of TikiTech.

Kam, Ralph Thomas. "Hawaiian History: An Annotated Bibliography." Greenwood, 1992.

Kam's bibliography serves as a foundational resource for creating an authentic Tiki-themed atmosphere within TikiTech. The historical context and cultural insights provided by this work ensure that the bar's environment is respectful and representative of Hawaiian history and culture.

Beckwith, Martha Warren. "Hawaiian Mythology." University of Hawaii Press, 1970.

Beckwith's seminal work on Hawaiian mythology is a key resource for guiding the creation of thematic elements and immersive effects at TikiTech. The myths and legends detailed in the book are woven into the fabric of TikiTech's narrative, embodying the traits of Tiki gods and heroes.

Kirsten, Sven. "Tiki Pop: America Imagines Its Own Polynesian Paradise." Taschen, 2014.

Kirsten's book provides a comprehensive overview of the Tiki culture phenomenon, informing the design and narrative elements of TikiTech. The visual and cultural exploration in "Tiki Pop" ensures that TikiTech offers an authentic and immersive Polynesian paradise experience.

Works Cited

- AlEars.Net. "Disney's Enchanted Tiki Room Reviews & Ratings." Accessed April 20, 2023.
<https://allears.net/walt-disney-world/wdw-dining/reviews/disneys-enchanted-tiki-room/>.
- Beckwith, Martha Warren. Hawaiian Mythology. Honolulu: University of Hawaii Press, 1970.
- Caldwell, K. "The Enchanted Tiki Room: Walt Disney's Tropical Serenade." Disney History Institute.
Accessed April 20, 2023. <https://www.disneyhistoryinstitute.com/2013/06/the-enchanted-tiki-room-walt-disneys.html>.
- Emerj. "How Disney Uses Artificial Intelligence." Accessed April 20, 2023.
<https://emerj.com/ai-sector-overviews/how-disney-uses-artificial-intelligence/>.
- Friedman, J. S. In the Shadow of the Mouse: A History of Disney Labor Relations. Gainesville:
University Press of Florida, 2019.
- Goldberg, A. H. Disney: The First 100 Years. New York: Disney Editions, 1999.
- Iwerks, L. The Imagineering Field Guide to Disney's Theme Parks. New York: Disney Editions, 2005.
- Kam, Ralph Thomas. Hawaiian History: An Annotated Bibliography. Westport: Greenwood, 1992.
- Kirsten, Sven. Tiki Pop: America Imagines Its Own Polynesian Paradise. Cologne: Taschen, 2014.
- Leibacher, H. Disney's Audio-Animatronics: A History. Orlando: Theme Park Press, 2018.
- Nichols, C. Walt Disney's Enchanted Tiki Room. New York: Disney Editions, 2013.

Ramiro's Lab. "Unreal Engine Serial Communication Plugin (Serial COM)" YouTube video, 13:12.

December 10, 2021. <https://youtu.be/ElM9EQVjR-8>.

Beyond Pinball. "Unreal Engine Communication with Arduino" YouTube video, 29:54. May 2, 2023.

https://youtu.be/W_24uGxQxIU.

Smart Poly. " Unreal Engine 5 Beginner Tutorial | Getting Started (2022)" YouTube video, 46:44. March

11, 2022. <https://youtu.be/ptCN4cysDig?si=ofG8X1J-2jY3gbhK>.

"Interior view of Trader Sam's Tiki Bar." Brandon Kleyla. Accessed 2/23/24.

<https://www.brandonkleyla.com/9u6flixrvtb63tb0g40ocyim0xetew>.

Special Thanks

Our heartfelt thanks go out to our incredible circle of family and friends whose unwavering support, generosity, and hands-on help made TikiTech possible in such a short timeframe.

To our families, thank you for your patience, encouragement, and understanding throughout this journey. Your support has been a constant source of motivation and strength.

A special thank you to our friends who pitched in tirelessly, whether it was assisting with setup, donating resources, or providing essential childcare support. Your contributions were invaluable and made a significant difference.



We deeply appreciate everyone who played a part, big or small, in bringing TikiTech to life. Your kindness, dedication, and willingness to lend a hand have not gone unnoticed, and we are incredibly grateful for each of you.

First round is on me – see you at TikiTech!

With heartfelt gratitude,

Erick Mahnke IV

Creator and Founder of TikiTech



Link to TikiTech Project Video: <https://youtu.be/nJ34-57h4Y0>



TikiTech an Immersive Experience