

NOTEBOOK





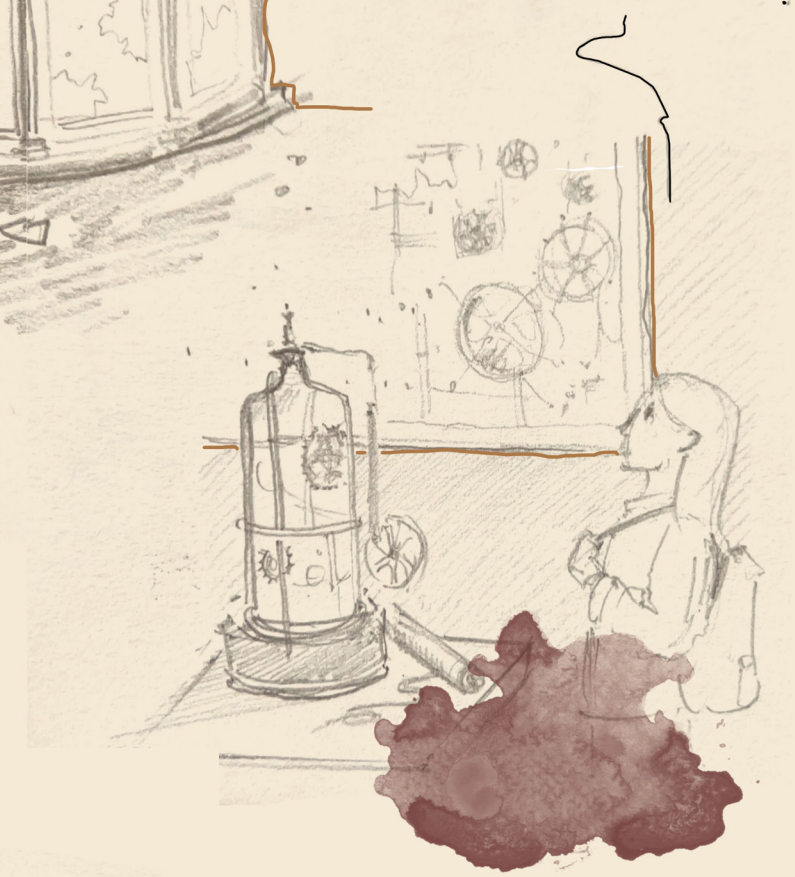
GUYS...
ARE YOU
SURE YOU
WANT TO GO
INSIDE?
THE BAR IS DECADES
ABANDONED.

THERE'S JUST SO
MUCH DUST EVERYWHERE...
EXCEPT ON THE CHAIRS,
LOOK!



SO MANY PROTOTYPES!

A SECRET GATEWAY
TO PHILON'S WORKSHOP!



WHAT IF WE SAT
ON THEM?



A HOLOGRAM APPEARS WITH A SCREEN
BEHIND IT. SHATTERED GLASS ON THE FLOOR.



Storytelling in progress

Reflexion about Great Pyramid of Giza



IF YOU EVER
MANAGE TO
PENETRATE THE
PYRAMID, DON'T
FORGET TO LOOK
AT THE GROUND.
IT'LL GUIDE YOU.



THE HARMONIC
CRISTAL OF GIZA
REPRESENTS THE
GLORIFICATION
OF THE AFTER LIFE.



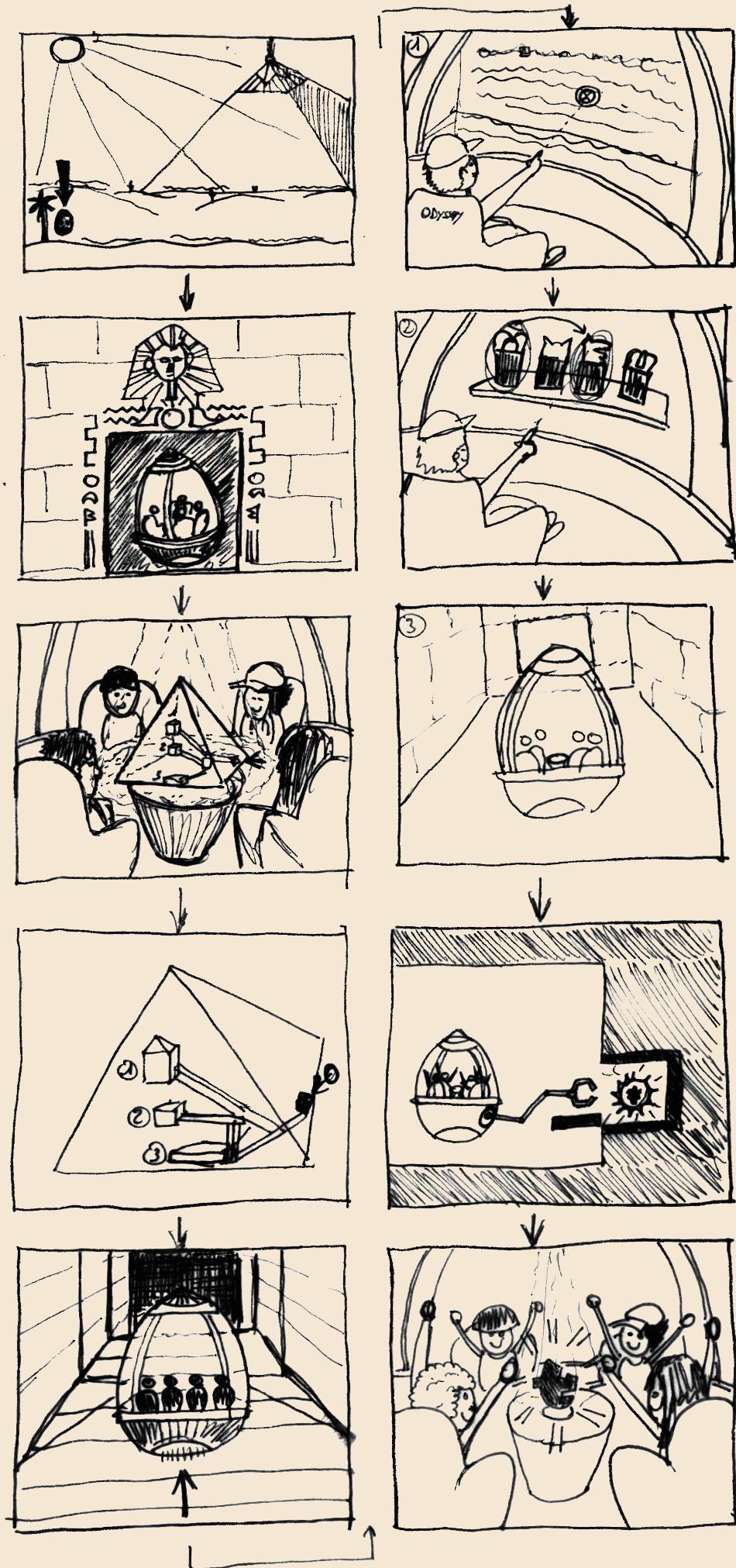
THE HARMONIC
CRISTAL OF
BABYLONIAN GARDENS
HAS KEPT EVERY
PLANT IRRIGATED
FOR CENTURIES.

ITS SURELY
HIDDEN IN
THE TEMPLE,
TOWARDS THE
NORTH-EAST.



Reflexion about Babylonian Garden

Mini Game reflexion



Canopy vases

