

The background is an underwater scene of a coral reef. The top half shows the water's surface with ripples and light filtering through, transitioning from blue on the left to a warm orange and red on the right. Below the surface, a diverse coral reef is visible, with various types of coral in shades of green, blue, and brown. A white rectangular frame is centered over the image, containing the main title and subtitle.

STATION ΩMEGA

Conservation Facility & Wildlife Observation Pavilion

created by: Chris Klein | Marcus Stone | Josie Pruitt
Mackenzie Motsinger | Weston Blum

in partnership with

O.R.C.A.

Odyssey Research & Conservation Association

Chris Klein – Creative Director + Show Writer

Marcus Stone – Producer + Show Writer

Josie Pruitt – Concept Artist

Mackenzie Motsinger – Graphic Designer

Weston Blum – Show Writer

DEEP IN THE HEART OF THE SEA...

...WE HAVE UNCOVERED RUINS THOUGHT TO BELONG...

...TO THE LOST CIVILIZATION OF **ATLANTIS**

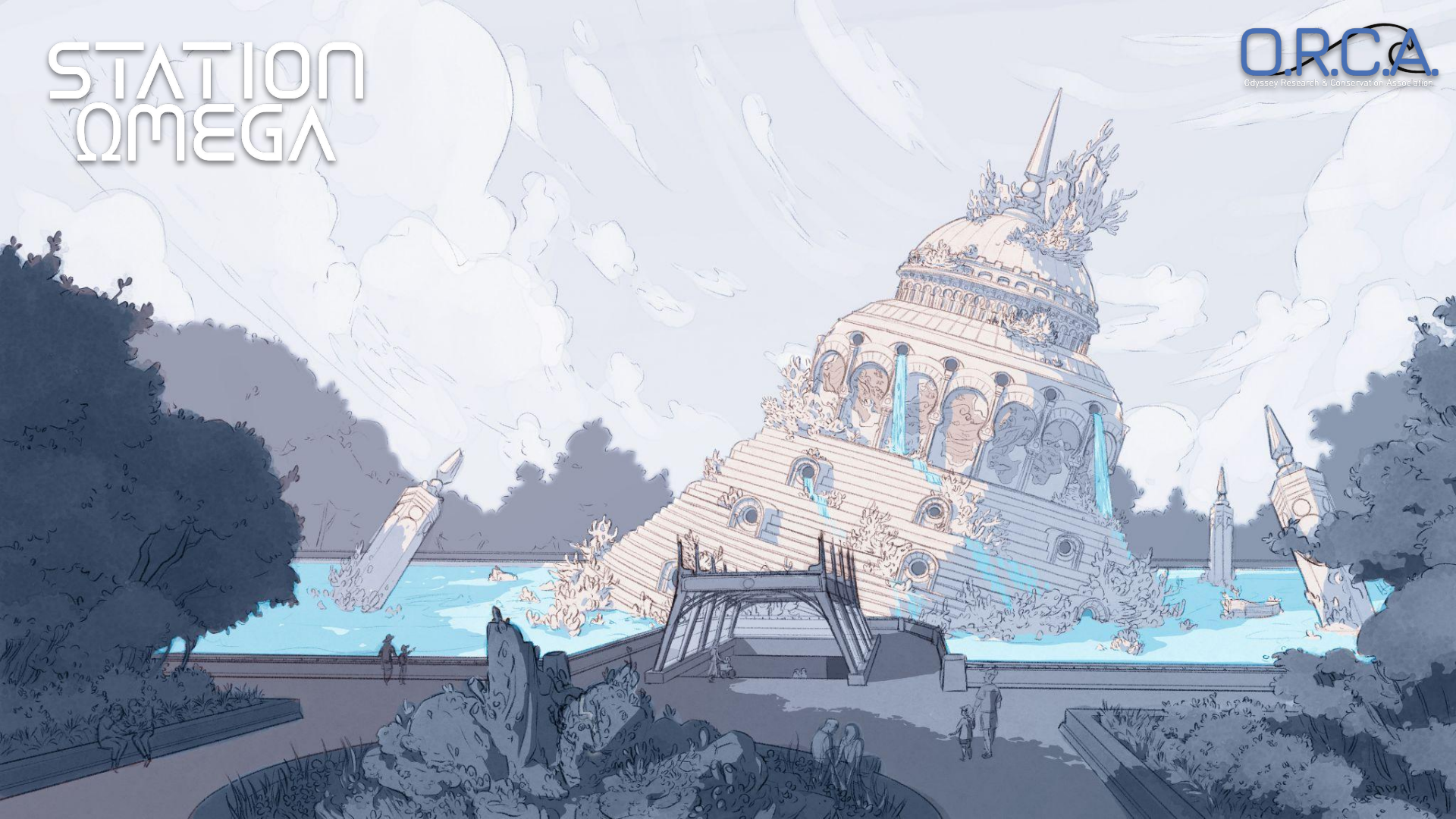
STATION ΩMEGA IS A RESEARCH FACILITY INSIDE A GRAND
TEMPLE THAT IS SINKING INTO THE SEA FLOOR

FROM HERE WE HAVE LEARNED MUCH ABOUT THE
CIVILIZATION THAT ONCE FLOURISHED...

...AND CONTINUE TO STUDY THE SEA-SANCTUARY THAT
HAS RISEN FROM THE RUINS

STATION ΩMEGA

ORCA
Odyssey Research & Conservation Association



Explorers and Conservationists of all ages are now invited to visit Station ΩMEGA and learn from what has been discovered as there is more than meets the eye inside the Temple

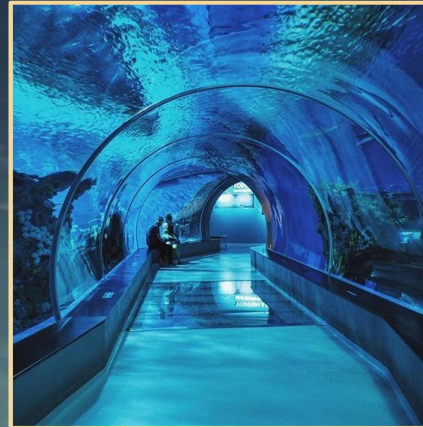
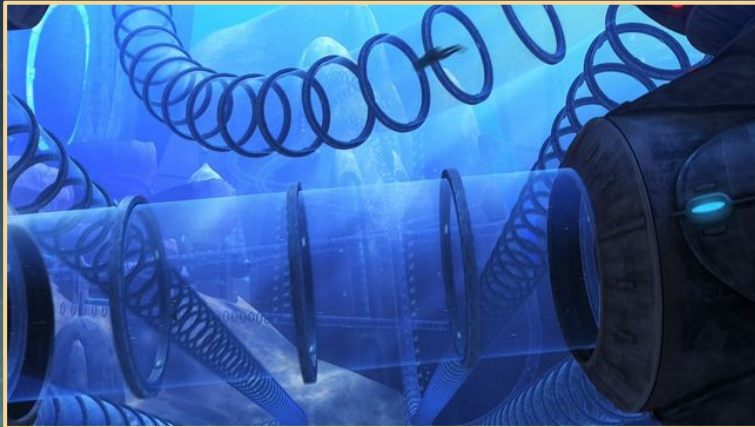
This mystical location provides explorers with an ancient quest and special look at the secret reasons discovered for the city's destruction...

O.R.C.A. hopes to partner with real-world wildlife foundations and marine life institutes to bring their knowledge to inspire & inform Guests on how to take action in their own lives

HYPERTUBE

Guests take O.R.C.A.'s underwater escalator/hypertube to get to the Station where they will be greeted by members of the association

- Guests will have their first opportunity to view the sea life of our open-air oceanarium
- Guests will also notice the dilapidation of the approaching Temple that separates the lower, upright section from the upper, tilted and falling ramparts
- This is used as the fade between the surface and underwater worlds for our Guests



STATION ΩMEGA

O.R.C.A.
Odyssey Research & Conservation Association

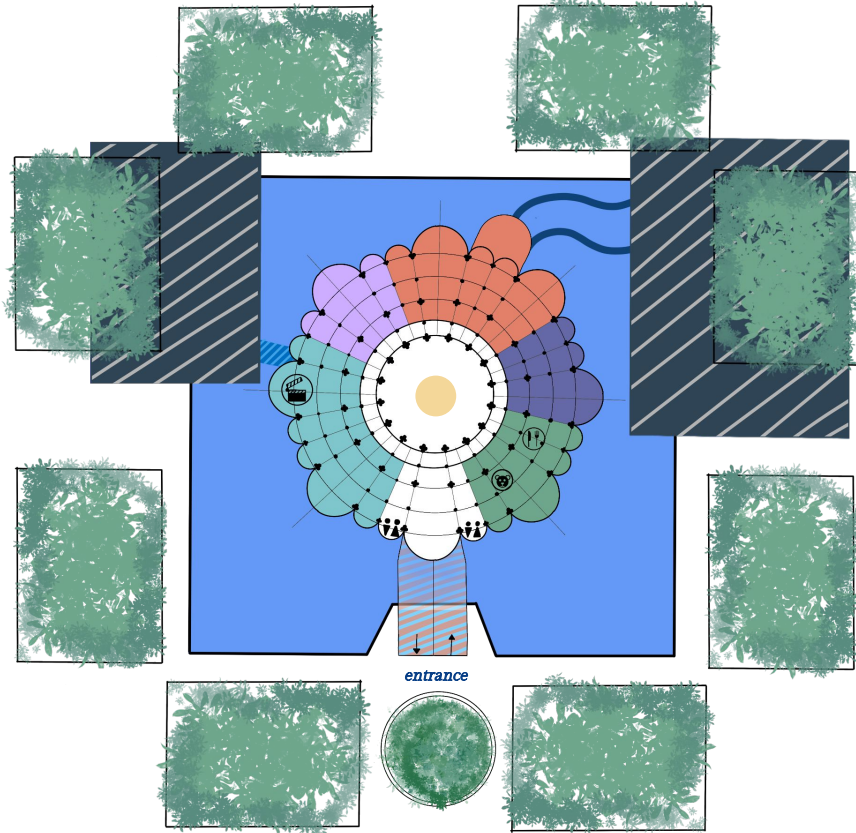


Station ΩMEGA is centered around spreading awareness of sea life, environmental impacts, and worldwide + local conservation efforts

Guests have a variety of activities to inspire them to action:

- E-Ticket Flume Ride — ATLANTIS: Uncover the Lost Secrets (ages 5+)*
- Marine Life Oceanarium & Aquarium Exhibits (all ages)*
- Conservation Edu-tainment Show (all ages)*
- Explorers' Quest Interactive Exhibits (ages 5-12)*
- Rubble Rumble Play Area (ages 3-10)*

PAVILION MAP



-  *E-ticket Area + Rubble Rumble*
-  *Atlantean / Extinct Marine Life Exhibits*
-  *Retail & Quick-service F&B*
-  *Modern Day Marine Life*
-  *Deep Sea & Bioluminescent Life*
-  *Conservation Facility (left) | Ride Building (right)*

Parking lot surrounds front and sides of Pavilion

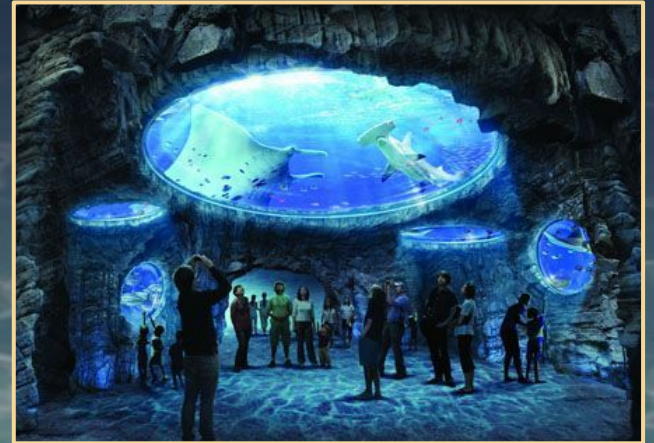
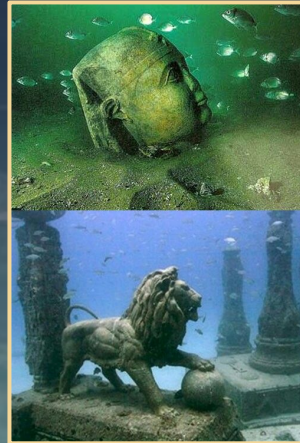
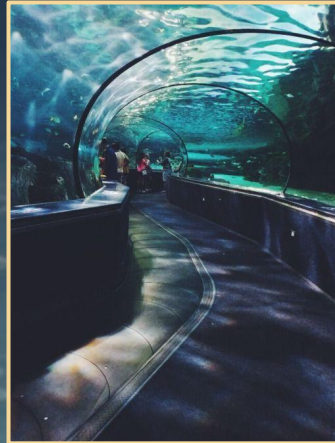
Conservation Facility & Ride Building are situated underground

AREA DEVELOPMENT



The Pavilion's look-and-feel is largely derived from narrative—it's the site of an **underwater excavation, once teeming with marine plant life, as well as ruins** in the process of being uncovered.

Some walls of the Pavilion offer exquisite views into the surrounding **functioning oceanarium and digital viewport ceiling**, paving the way for **interactive 'edu-tainment' exhibits** and **opportunities for discovery**.

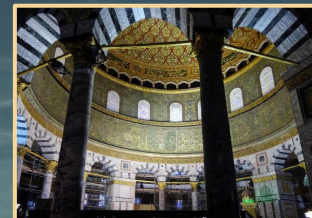


ARCHITECTURAL STYLING

Atlantean architectural styling takes reference from **“real world” ancient wonders from diverse civilizations**, giving the Pavilion a timeless atmosphere that resists categorization.

Being an excavation site, the interior of the Pavilion is a tension between:

- Modern functional research & conservation facility
- Archaeology infrastructure
- Fanciful, crumbling Atlantean architecture being uncovered



CAST & CREW

Our Cast & Crew will be scripted as members of O.R.C.A. with a variety of attire and roles depending on the area stationed.

- Excavation & Archaeology Team
(Ride & Quest Operations)
- Conservation & Research Team
- Underwater Dive Team
(Tank Maintenance)



EXHIBITS

A variety of exhibits populate the station, with an emphasis on how environmental factors affect the world's marine ecosystems

Guests can learn about:

- Endangered species (local & global)
- Coral reefs, filter-feeders, and the ecology of plant life
- Deep sea creature, environments, & bioluminescent life
- Prehistoric marine life, including real fossils!



EDU-TATIONAL SHOW PROGRAMMING

Join O.R.C.A. as they deep-dive into the **worldwide effort to conserve our oceans** and learn about:

- Programs on rehabilitation and repopulation of local endangered species
- Planetary impacts of waste on aspects of marine plant life, like coral reef bleaching
- Sustainable fishing practices and the benefits of biodiversity

All material is tailored and suitable for all ages

Climate change and coral bleaching

Imagine you're gear up for the Great Barrier Reef. Instead of the famously vibrant coral, you see a dull and lifeless reef. How did this happen?

Coral are colonial invertebrates. They're made of hundreds of animals called polyps. During the day, these tiny tubes called polyps use photosynthesis to produce energy. The zooxanthellae, and the compounds made by coral polyps to protect them, are what make corals so colorful.

The zooxanthellae make energy from sunlight. Most of this energy is given to the coral polyps. So, the polyps provide shelter and the zooxanthellae provide energy. It's a win-win relationship. Everyone's happy.

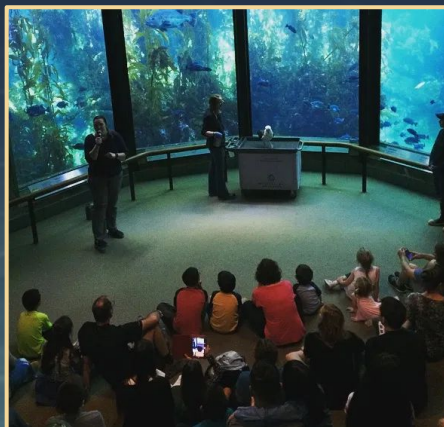
Coral and zooxanthellae are fussy about water temperature. If it stays too warm for a while, the zooxanthellae become stressed. They can't convert the sunlight to energy efficiently anymore. The water energy here has changed that one has to be gone, and the zooxanthellae get kicked out.

If this goes on for long enough, all the zooxanthellae will be gone, and the coral turns white. It's bleached. Corals can recover from bleaching, but if the temperature stays too hot, the coral stays and the reef turns into a wasteland.

As the world's oceans become warmer, coral bleaching might occur more frequently on the Great Barrier Reef and coral reefs the world over.

LEARN MORE: noaa.gov/au/coral-bleaching

NOVA SCIENCE FOR CURIOUS MINDS



< we need to STOP POLLUTING our OCEANS WITH PLASTIC

More plastic is thrown away in a single year than was ever used in the history of the world.

A study found that a quarter of fish at markets in California, including salmon, have plastic in their stomachs.

100,000 marine animals die every year from plastic pollution (and there are the numbers FORBID).

At least 2/3 of the world's fish stocks are suffering from plastic pollution.

It's estimated that 60% of all animal species have eaten pieces of plastic, with 80% of marine birds and 100% of marine mammals by 2050.

Each year, 8 million metric tons of plastic end up in the ocean.

Approximately 1 MILLION sea birds die each year from plastic.

100 million children die each year from plastic pollution in their stomachs.

Plastic pollution is the leading cause of death for marine mammals.

Endless of our trash can find its way into the ocean. 300k and 300m.

More plastic is found in the deep ocean and 100-200 km below the surface than ever before. It's the first time the ocean has been so full of plastic pollution.

LEARN MORE: www.oceanconservancy.org

ISF WATER #ISFwater #ISFfoundation

www.isfwater.com @isfwater www.oceanconservancy.org www.biodiversity.org and www.ply.org



EXPLORERS' QUEST

Calling all young explorers and conservationists!

Help O.R.C.A. discover hidden knowledge of the Temple by completing an interactive quest!

Prove your worth to Mother Nature and be rewarded!

- An ancient amulet allows you to unlock clues hidden within artifacts and exhibits scattered around the Temple
- Up to 10 puzzles (3-5 minutes long) can be completed at the leisure of your team
- Guests can find a member of the Excavation Team outside Rubble Rumble to start their journey
- Completing the journey will earn Guests and team (of 6 or fewer) a special show by Mother Nature and a token of Atlantis!



RUBBLE RUMBLE PLAY AREA

Young explorers are invited to explore the rubble, artifacts, and sea plant life that once filled the Temple

Here they can make friends, have adventures, and uncover their own special secrets of the Temple!

Parents can relax in provided nearby seating with good sightlines to their energetic adventurers

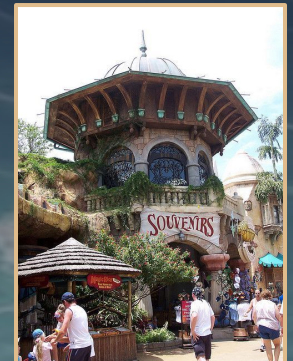


RETAIL + QUICK-SERVICE F&B

The O.R.C.A. Pavilion also features “merchan-tainment” programming; centered around themed apparel, souvenir items, and discovery-oriented toys for explorers of all ages

The retail space is adjacent to O.R.C.A.’s food & beverage canteen, which combines build-your-own quick-service fare with grab & go selections suitable for adventurous and picky eaters alike

Just as the precise geographic location of Atlantis escapes us today, the merchandise, food, and drink items for sale are inspired by a myriad of cultures worldwide to complement Atlantis’s resistance to categorization



ATLANTIS: UNCOVER THE LOST SECRETS

The crown jewel and focal experience of the O.R.C.A. Pavilion is a thrilling (yet approachable) E-ticket attraction, where the story of Atlantis is told—and experienced—firsthand, to demonstrate to Guests the impact a civilization can have on its environment.

Aboard a cautionary voyage, Guests are able to experience the past glory and subsequent catastrophic fall of the ancient seafaring civilization once thought to be impervious, leaving them to ponder the importance of their role in living in harmony with nature.